



Attachment Tamping Unit AST 8



Quick connecting elements at the attachment ensure the simple and safe connection to the excavator's boom and hydraulic system.

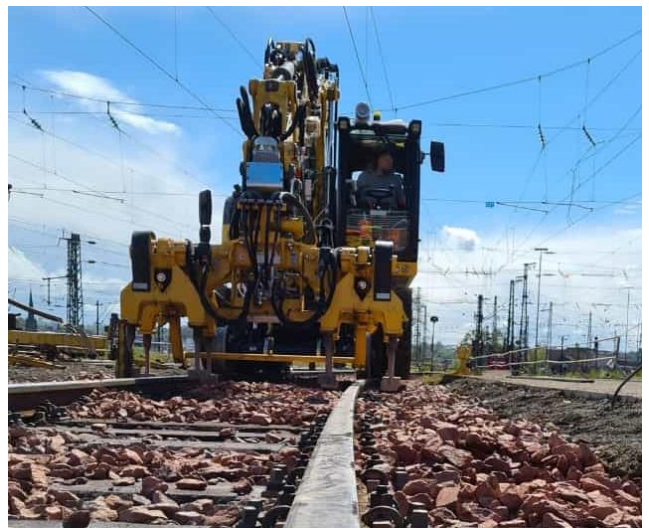


Hydraulic power is provided through the excavator's hydraulic system which is connected via quick coupling elements.

Tamping work at tracks and switches is efficiently executed with the "Attachment Tamping Unit AST 8". The attachment features two working units with a total of 8 tamping picks which simultaneously dig into the crib ballast.

For working at switches, one tamping section can be raised hydraulically.

A rotator permits the alignment of the attachment with the sleeper position. All control functions are effected by the operator from the cabin of the two-way excavator.



Technical Data:

Length	: depending on track width: for standard gauge: 2,200mm
Width	: 845 mm
Height	: 1,400 mm
Weight	: 1,550 kg
Track Widths	: 1,435/1,000 mm
Tamping perf.	: ca. 80 - 120 m/h

Operational advantages of the Tamping Unit AST 8:

- Substantially higher utilisation rate of the two-way excavator through the use of attachment units
- Reduced labour as the work can be effected by excavator operator from his cabin
- Uniform tamping quality and higher tamping performance as compared to manual labour
- Quick and simple exchange of the tamping unit with other attachment